



# Trillium Gold™ Holter Analysis Software

Advanced Technology

Choice of Holter Recorders

Accurate and Reliable  
Analysis

Flexible Reporting

Proven eidos™ Holter  
Algorithm

Pacemaker Detection  
and Reporting

PDF Output

Fast Return  
on Investment

Customizable  
Leasing Programs

Upgradable and  
Expandable

Turnkey Systems Available

**Choose Power that's Easy to Use**  
Our Trillium Gold Holter Analysis Software can be used with our Trillium 2000™, Trillium 3000™, Trillium 4000™, or Trillium 5000™ Holter Recorders to form a complete and comprehensive Holter Monitoring System that is both powerful and easy to use. Trillium Gold based Holter Monitoring Systems allow you to get started with just a single recorder for 2 or 3 channel, 24 or 48 hour, monitoring applications.

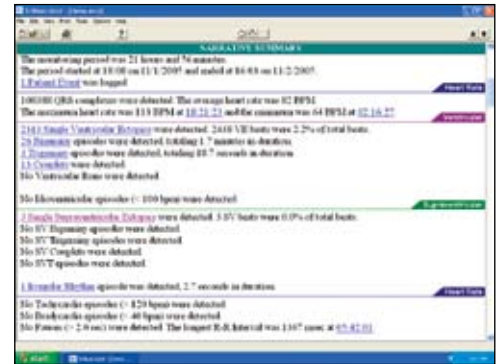
**Provide the Best Possible Care**  
Our Trillium Gold Holter Analysis Software provides flexible and accurate analysis, expanded functionality, powerful editing capabilities, and configurable and editable reports to give you the information you need to provide the best possible patient care.

Trillium Gold provides complete support for pediatric through adult applications and include pacemaker detection and reporting (for pacemaker compatible recorders). Please see the reverse side of this document for more complete details on our Trillium Gold Holter Analysis Software.

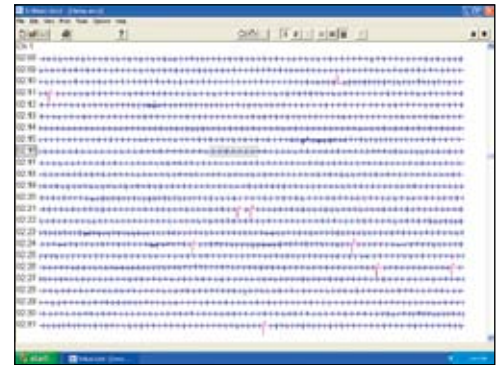
**Discover the Value Leader in Holter**  
Forest Medical Holter Monitoring Systems are surprisingly affordable and provide the best long term value in Holter monitoring technology.

Trillium Gold based Holter Monitoring Systems are easily and economically expandable with multiple recorders and workstations and are fully upgradable as new developments arise. By choosing Forest Medical, you can be sure that you've made the right investment in Holter monitoring technology now and for the future.

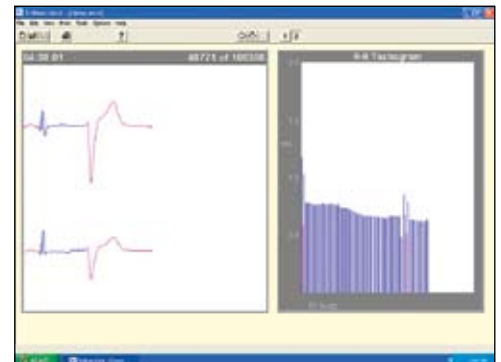
**Call Forest Medical**  
Call us today for a no obligation analysis of your Holter monitoring requirements.



*Narrative Summary*



*Full Disclosure 60 Seconds*



*Superimposition*



*Forms Page 1*

Forest Medical, LLC • 6700 Old Collamer Road • East Syracuse, NY 13057  
Phone: 800-844-2037 • 315-434-9000 • Fax: 315-432-8064  
sales@forestmedical.com • www.forestmedical.com

# Trillium Gold™

## Holter Analysis Software



### Overview

- 32 Bit Windows® Application
- Point and click, web browser-like operation
- Each report page is displayed on screen
- Color-coded arrhythmias
- Color-coded pacer spikes
- No limit to number of patient files that can be stored on disk
- PDF Report output
- On-screen help, tutorial, and hints

### Analysis Algorithm

- Forest Medical *eidōs*™ Holter Algorithm
- Adjustment for Atrial Fibrillation / Irregular Rhythm sensitivity

### Pacemaker Detection / Reporting

- Single and dual chamber pacemaker spike detection
- Total pacer spikes detected
- Failure to capture and failure to sense episodes reported
- Paced beat rate graph
- Fully editable paced beat form(s)

### Editing

- Enter Cover Page data
- Reconfigure Cover Page
- Delete or add Report Strips
- Delete or add individual episodes, or delete all episodes
- Change individual existing beat label
- Insert a beat
- Artifact Category Designation
- Designate Artifact from Full Disclosure
- Manually Designate Paced Beats
- Report data is automatically recalculated
- Parameter Settings
- Change Report Strip Label
- Change Form Label

### Superimposition

- One or two beats
- Variable rate scanning
- One beat or one minute jog-back / jog-forward
- Automatic jog-back based on user reaction time
- R-R histogram or tachogram side display
- Auto stop on episode(s)

### Q-T Interval Measurement

- Graph
- Superimposition
- Editing
- Raw
- Corrected
- Auto Q-T Calipers

### R-R Interval Measurement

- Shortest and Longest R-R Interval
- Time-domain Heart Rate Variability statistics

### On-Screen Calipers

- Measure time intervals or ST level
- Caliper Interval Repeat
- Calipers can be saved with strip
- Show Rate Measurements
- Show R-R Interval Measurements

### Report

- Memory Card Data (MCD) File Storage
- Memory Card Report (MCR) File Storage
- Copy / paste text into Windows clipboard
- Copy / paste graphs into Windows clipboard
- Customize Report Layout
- One Page Report Option

### Cover Page

- Patient Information
- Medications / Symptoms
- Print Logo
- Physician Information
- Referring Physician Information
- Conclusions
- Parameter Settings
- ICD-9 CM Drop Down Box

### Narrative Summary

- Initial Signal Quality
- Total QRS Complexes
- Average, Maximum, and Minimum Heart Rate
- Total Ventricular Ectopic Beats (VE)
- Isolated Ventricular Ectopic Beats
- Bigeminy, duration
- Trigeminy episodes
- Couplets (VE Pairs)
- Ventricular Runs, duration, longest and fastest
- Idio-ventricular Rhythm (<100 BPM)
- Total Supraventricular Ectopic Beats (SVE)
- Isolated Supraventricular Ectopic Beats
- SV Couplets
- SV Pairs
- SV Bigeminy
- SV Trigeminy
- Supraventricular Tachycardia (SVT), duration, longest and fastest
- Irregular Rhythm, duration
- Tachycardia, duration
- Bradycardia, duration
- Pauses (Asystole)
- Longest Pause (Asystole)
- ST Depression / Elevation
- Patient Events
- Pacemaker Analysis (Total Paced Beats, Failure to Capture, Failure to Sense)

### Hourly Summary

- Customizable
- Average, Maximum, and Minimum Heart Rate
- Isolated Ventricular Ectopic Beats
- Bigeminy
- Trigeminy
- Couplets (VE pairs)
- Ventricular Runs
- Isolated Supraventricular Ectopic Beats
- SVE Pairs
- SV Bigeminy
- SV Trigeminy
- Supraventricular Tachycardia (SVT)
- Tachycardia
- Irregular Rhythm
- Bradycardia
- Pauses (Asystole)
- ST Depression / Elevation
- Patient Events

### Graphs

- Heart Rate
- Ventricular Ectopics
- Ventricular Runs
- Supraventricular Ectopics
- Supraventricular Tachycardia
- Artifact Index (2 or 3 channel)
- ST Level (2 or 3 channel)
- Normal R-R Histogram
- Abnormal R-R Histogram
- Pacer Rate
- Pacer R-R Histogram
- Q-T Graph
- Pause Graph

### R-R Scatter Plot (per hour)

### Ventricular Forms

- Beat Count and Sample of up to 32 Ventricular Forms
- Beat Count and Sample of up to 32 Normal Forms
- Reclassify Forms by Prematurity and Shape
- Turn off a channel
- Find similar beats – Prospective analysis

### Strips

- Automatic Report Strips in full-scale (25 mm/sec) or 8, 18, or 32 mini-strips per page
- Strip List
- Extract strip from any time in the monitoring period
- Extract all strips of an episode type

### Full Disclosure

- Print in 1 Hour Increments
- 15, 30, or 60 seconds per line
- 1 Channel Only
- Any combination of 2 or 3 channels
- Patient event indicated by circle
- Episode Count at end of line (HR, VEs, ST, SVEs)

### Pediatrics

- Rate Parameter Settings
- High Rate Algorithm
- Under 20 kg Patients

### Alternate Outputs

- Graphs bitmapped to clipboard
- Text bitmapped to clipboard
- Summary Report ASCII text upload
- MCR File – “report-only” file (typ. <100 KB)
- PDF Output

### Electronic Medical Records Support

### Supported Recorders

- Trillium 2000™ Holter Recorder
- Trillium 4000™ Holter Recorder
- Trillium 5000™ Holter Recorder
- Trillium 3000™ Holter Recorder/Analyzer

### Minimum Computer Requirements

Windows 98SE; 2000; or XP, 150 MHz PII or above,  
32 MB of Memory, 100 MB of Hard Disk space,  
SVGA Video, (2) available USB Ports, and  
a 300 dpi or higher resolution printer.

Forest Medical, LLC • 6700 Old Collamer Road • East Syracuse, NY 13057  
Phone: 800-844-2037 • 315-434-9000 • Fax: 315-432-8064  
sales@forestmedical.com • www.forestmedical.com

Notice: In the United States, Federal law restricts this device to sale by or on the order of a physician.